



# Avadh Texwood & Systems [P] Ltd

SIMPLIFYING SYSTEMS



**ONE STOP SHOPPING CENTER  
FOR  
END TO END RESOURCE MANAGEMENT  
WITH  
CUTTING EDGE 'TOPSPIN' ERP SOLUTIONS**



**FOR  
TEXTILE SPINNERS**

## COMPANY PROFILE & SOFTWARE CATALOGUE

**USHERING A NEW ERA OF SUPPLY CHAIN & CUSTOMER RELATIONSHIP MANAGEMENT**

**REVENUE / EXPENSE BUDGETING**

**COSTING**

**MARKETING, CRM & PRODUCTION PLANNING**

**SUPPLY CHAIN MANAGEMENT**

**RAW MATERIAL PROCUREMENT**

**MATERIALS MANAGEMENT**

**PRODUCTION CONTROL**

**MAINTENANCE MANAGEMENT**

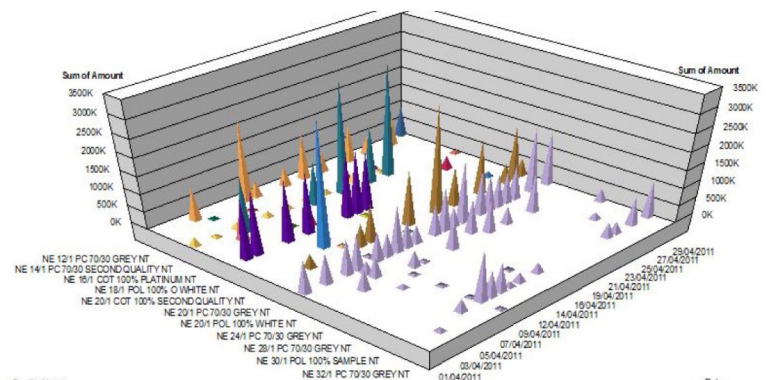
**QUALITY CONTROL**

**SALES MANAGEMENT**

**FINANCIAL MANAGEMENT**

**HUMAN RESOURCE MANAGEMENT**

**STRATEGIC MIS**





Avadh Texwood & Systems [P] Ltd  
SIMPLIFYING SYSTEMS

ATWSPL

ATWSPL 'TOPSPIN' ERP [Enterprise Resource Planning] Exclusively For Textile Spinning Industry

# 'TOPSPIN' ERP

ONE STOP SHOPPING CENTER TO ACQUIRE CUTTING EDGE ERP

USHERING A NEW ERA OF CUSTOMIZED INDUSTRY SPECIFIC ERP SOLUTION

## 'TOPSPIN' MODULES

BUDGETS & COSTING

MARKETING & CRM

PRODUCTION  
PLANNING &  
CONTROL

MAINTENANCE  
MANAGEMENT

ENGINEERING  
MANAGEMENT

STATISTICAL QUALITY  
CONTROL

SALES  
MANAGEMENT

HUMAN  
RESOURCE  
MANAGEMENT

FINANCIAL  
MANAGEMENT &  
TAXATION

'TOPSPIN' ERP has been conceived, designed, developed & implemented by ATWSPL to cater to the emerging automation requirement of textile spinning industry.

'TOPSPIN' is seamlessly integrated to incorporate all the business processes & activities while managing spinning mills in a multi user and multi location environment.

This end to end integration begins right from ascertaining production plan through generating BOM, raw-material procurement, sales and debtor/creditor management etc. 'TOPSPIN' completes both R [requisition] to P [procurement] & O [order] to C [consumption] cycles.

'TOPSPIN' is capable of providing absolute management controls to the

spinners in terms of optimized cost/production & quality assurance. This includes budgetary allocations for the monthly expenses and an instant MIS indicating variances with actual expenses evolved out of financial accounting [book keeping].

Apart from providing budgetary MIS, 'TOPSPIN' evaluates cost of each and every sales contract with a customizable cost sheet and display variances of individual elements of cost with actual cost incurred while completing the sales cycle.

'TOPSPIN' value addition is a continuous process where value is co-created as customizations are organized after consistent interaction with textile & commercial professionals right from shop floor to the top echelons of managerial hierarchy.



RING SPINNING SYSTEM



OPEN END SPINNING SYSTEM

## SPECIAL POINTS OF INTEREST:

Management Controls

Supply Chain  
Management [SCM]

Customer  
Relationship  
Management [CRM]

Strategic MIS

User Administration

User Conveniences

'TOPSPIN' ERP enables users to obtain enterprise wise information in an integrated manner so that commercial and technical issues can be addressed concurrently.

ERP takes care of all the five resources [M] i.e. Market, Materials, Machine, Men & Money. ATWSPL has added another M i.e. Measure e.g. quality, productivity, efficiency.

'TOPSPIN' ERP can deliver

BPM [Business Process Management] that helps businesses make efficient use of their financial, human, material and other resources and contains the concept of a control or feedback loop and alert business users to variances & deviations.

'TOPSPIN' ERP SMIS Technologies can deliver instant strategic information pertaining to top management review. Decision makers

without being involved in day to day affairs can access detailed information at the click of a mouse.

'TOPSPIN' ERP reports are organized as per top, middle & lower managerial requirements.

## ATWSPL 'TOPSPIN' ERP HIGHLIGHTS



**www.atwspl.com**



MODERN SPINNING MILL



**ATWSPL**

## ATWSPL SPECIALIZATION & DOMAIN EXPERTISE

ATWSPL is specializing in ERP software since 1998 which is versatile to meet the diverse requirements of different production units, depots and sales centers controlled through a centralized headquarter.

The information reservoir is now so profound and comprehensive that every textile domain has been taken care off to explicitly define its business propensity.

ATWSPL has developed ERP solution translating the vision of ATWSPL chairman S.V. Misra a textile technocrat with forty plus years of industrial experience including a long stint

with the 'Aditya Birla Group Of Mills'.

'TOPSPIN' software is designed to cater to the spinning requirements of cotton, woolen, synthetic and blended, grey & dyed yarns.

'TOPSPIN' fits to ring spun & rotor spinning systems and delivers domestic as well as export sales documentation along with statutory reports related to sales, purchase, production, HR, excise, sales tax & income tax etc.

'REFLEX' a web based applications is interfaced with 'TOPSPIN' to update notifications over a select brand of smart phones & tablets.

'TOPSPIN' has made best use of object orientation for backward integration like ginning, cotton trading & forward integration with yarn trading, fabric, processing, garment manufacturing and retailing.

'TOPSPIN' can also be interfaced with e-commerce to fully exploit the electronic market all across the word.

TCO represents total cost of ownership and this ERP is highly competitive when compared to international brands and industry specific functionalities

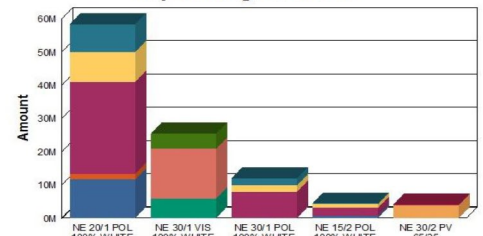
### TOPSPIN Graphics



Top Selling Products From 01/04/2011 To 30/06/2011

Printed On: 22/03/2012 Page: 1/1

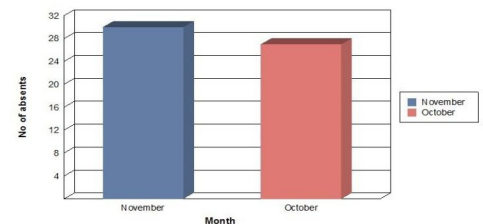
### Top Selling Products



Emp.Code: 8808

Employee Name: Mihlesh Rai

### Annual Absenteeism



### ATWSPL GROUP COMPANIES



Anshula Technological Engineering PVT. LTD.

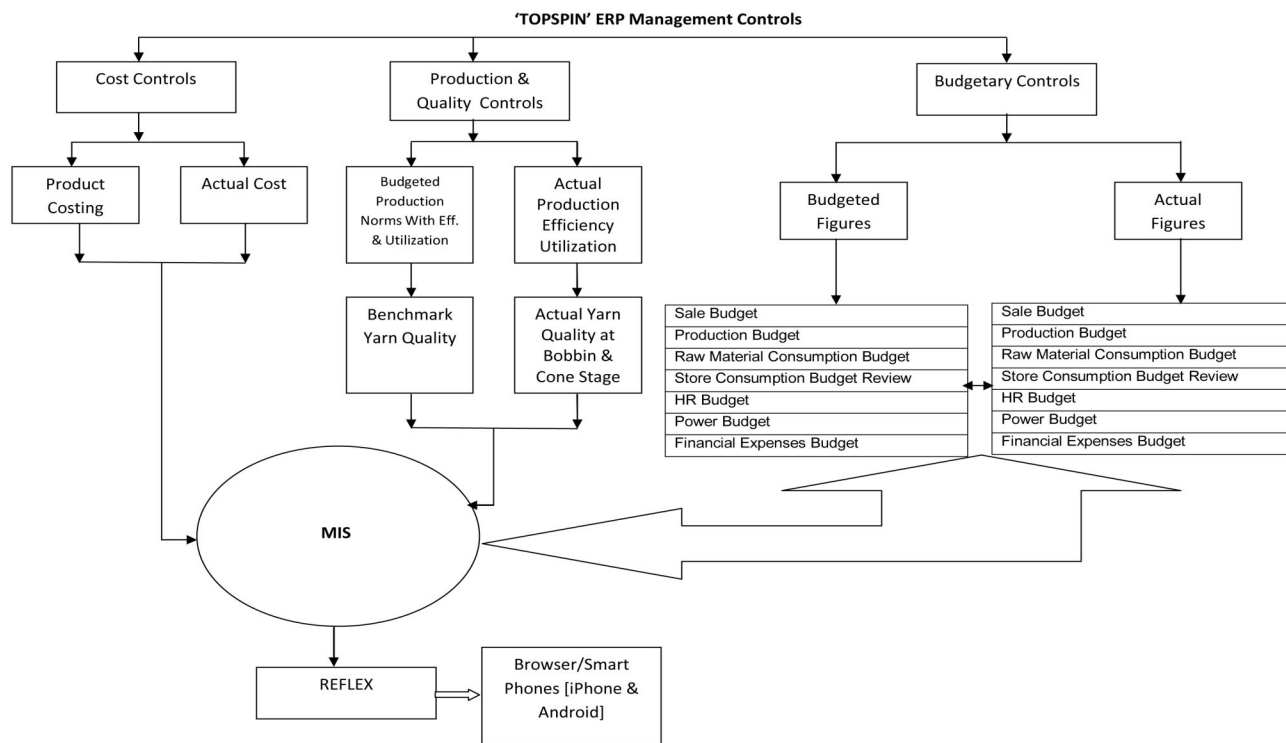


Master School Of Management



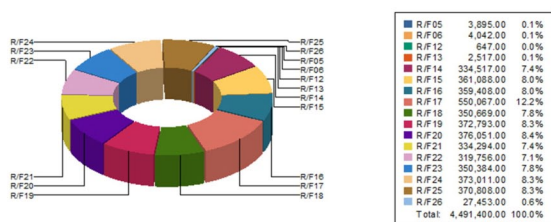
Master Ad Inc

# 'TOPSPIN' CUSTOMIZED ERP SOLUTIONS FOR TEXTILES SPINNERS

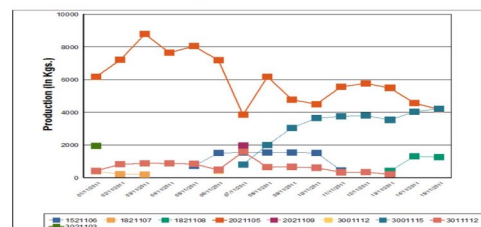


## 'TOPSPIN' GENERATED MANAGEMENT INFORMATION

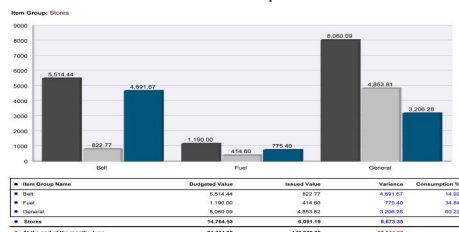
Machine Wise Contribution in Production



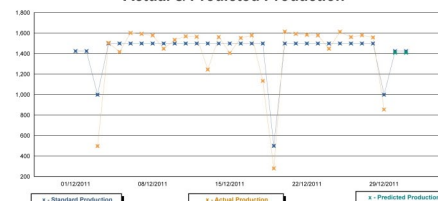
Lot Wise Production Status



Store Material Consumption MIS



Actual & Predicted Production



## CONTACT DETAILS



### ATWSPL

Website : [www.atwspl.com](http://www.atwspl.com)  
e-mail : [services@atwspl.com](mailto:services@atwspl.com)

### Prem S. Bajpai

[CEO & Managing Director]

Mobile: +91-9792565999; 9335925766

e-mail: [premsbajpai@atwspl.com](mailto:premsbajpai@atwspl.com)

Skype: atwspl

### Meenakshi Srivastava

[Business Analyst]

Mobile: +91-9336339333

e-mail: [meenakshi@atwspl.com](mailto:meenakshi@atwspl.com)

### Aviral S. Bajpai

[Chief Technology Officer]

Mobile: +91-9565513605

e-mail: [aviral@atwspl.com](mailto:aviral@atwspl.com)



Avadh Texwood & Systems [P] Ltd [ATWSPL]

Mumbai : A/401/402, Leo Building, Plot No:479,TPS. III, 24th Road, Khar (W), Mumbai - 400 052, Maharashtra, India

Lucknow : D-15, 1st & 2nd Floor, Rajajipuram, Near PNB, Lucknow -226 017, U.P., India